

RAVENSTHORPE/COTON CIRCULAR WALK

This is a circular walk of approximately 4 miles from Ravensthorpe going via Coton , past Coton Manor , across Ravensthorpe reservoir causeway and back to the starting point.



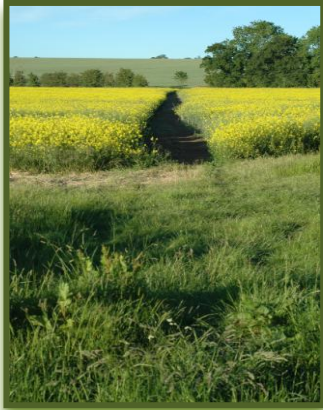
The walk follows gently undulating farm land which often has sheep in the first two fields and is then mainly arable. There are beautiful views across open countryside towards Coton, Guilsborough and Ravensthorpe reservoir. You may see and hear larks and buzzards and part of the reservoir is a wildlife sanctuary. Lunch or evening meals can be had at The Chequers pub in Ravensthorpe or at Coton Manor but check their website first for opening hours etc.



The walk begins at the entrance to Cuffy's Fields, which is on the Guilsborough Road, on the left going out of the village. It is marked with a green footpath sign and a way marker on the gate (**see photo**). Go down the field to a gateway and then up the next field to a stile. Cross the stile and walk alongside the hedge (on your left). At the end of the field turn right (**marker on post**) and walk down the field with the hedge on the left (ignore the track to the right at the bottom of the first field).



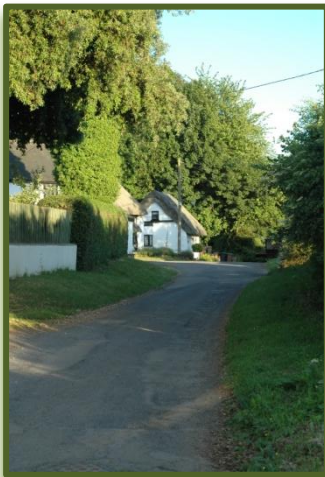
Continue downhill on the track until you reach the junction with another, broad track to the left. Turn left (**note way marker on large ash tree-see photo**) and follow the undulating track across two fields. On the hill over to the right you will see farm buildings that you will pass later on. At the end of the second field, turn right and follow the track keeping the hedge and stream on your right. You will reach a footbridge with way markers pointing left, turn left and follow the track still keeping the hedge and stream on your right. **Do not cross the bridge.**



At the end of the field you will arrive at a junction with the footpaths to West Haddon and Coton. (The track continues ahead but this is now a private road.) **Turn right and head across the field (usually through crops- see photo)** to a footbridge, cross this and then walk straight ahead up the next field. As you go up the hill you will see the tops of two large trees ahead – aim for the one on the left and you will soon see the outbuildings referred to earlier. Walk past the buildings, keeping them on your left. At the end of these, bear left and then immediately turn right on to a farm track. There is a view of Guilsborough church spire to the left.



Take the track down to the stream then up the next field (**see photo**) and down again to the bottom of the field where the track swings left; **this is private so bear right** and walk up a grassy path, keeping the hedge on the left, towards Coton. Note the public footpath that goes off to the left of the grassy path, towards Guilsborough. Ignore this and continue to the end of the path which swings right around the boundary of a private house until you arrive on a road/lane



Turn right onto the lane and continue past houses on the left. At the end of this road, at Spinney Cottage, you meet the highway, bear right (towards Ravensthorpe and East Haddon)and walk past Coton Manor, then continue on the road which swings right and goes downhill to the reservoir causeway Note – there is no footpath on the highway and care needs to be taken, especially when crossing the causeway as the road is fairly narrow and at certain times of the day traffic can be heavy. The reservoir is home to a variety of birds: swans, Canada geese, ducks, coots, grebe, cormorants etc. and there are often several herons on the wildlife reserve side (up to 11 have been spotted).

Having crossed the causeway, walk up the hill and you will arrive back at the entrance to Cuffy's Fields at the start of the walk.